

# CASE STUDY | Closure of a 6-year indolent chronic wound in IDDM patient

## Patient background and wound history

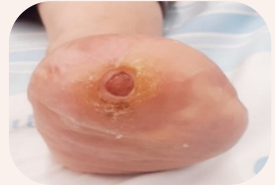
Patient JP was a 34-year-old woman suffering from insulin-dependent diabetes mellitus (IDDM) and neuropathy. As a result, she had a trans-metatarsal amputation in her left foot. Six years after the amputation, the wound still had not healed despite receiving the standard of care for her condition and continued to experience occasionally infectious episodes.



Baseline

## Treatment

JP arrived in the emergency room after another infectious episode. She was prescribed oral antibiotics and seen in the outpatient wound clinic three days later. When she presented at the wound clinic, the infection had been resolved. The wound measured about 7 mm deep with furrow. The wound was then filled with MedCu copper dressing. The wound dressing was changed every three days.



1 week

## Clinical outcome

Within one week of applying the MedCu copper wound dressing, the wound volume was reduced by approximately 90%.

Six weeks after using the MedCu copper wound dressings, the wound was completely closed.



6 weeks

**After 6 years with an indolent chronic wound, JP was healed within 6 weeks of using MedCu copper wound dressings.**

## NATURE + SCIENCE = BETTER WOUND CARE

MedCu's antimicrobial wound dressings harness the power of copper to set a new standard in wound care.

As a natural essential mineral for the human body, copper has been used for centuries to care for and treat wounds. Today, copper is at the forefront of a revolution in advanced wound care. MedCu is the first and only antimicrobial wound dressing impregnated with copper oxide microparticles to receive FDA clearance and CE Mark.

MedCu wound dressings offer protection against a broad spectrum of pathogens, including antibiotic-resistant bacteria. The dressings are non-adherent, with no need to pre-wet, and can be cut to ensure optimal fit for patient comfort. With sustained antimicrobial action, the dressings have up to 7 day wear-time allowing for fewer changes and reduced clinician contact time.

MedCu allows clinicians to effectively and efficiently care for wounds towards complete healing.

### Areas of Use

MedCu's wound dressings are easy to apply and remove, and are suitable for a wide variety of applications including:

- Diabetic Wounds
- Leg & Foot Ulcers
- Pressure Ulcers
- First and Second-Degree Burns
- Surgical Wounds



SKU	Size inches	Size cm	Absorption Weight/Weight	Adhesive Contour
2C-0506-01	2x2.4	5x6	750%	-
2C-1012-01	4x4.5	10x12	1000%	-
2C-1020-01	4x8	10x20	1000%	-
2C-2020-01	8x8	20x20	1000%	-
2C-0505-01a	4x4 Pad: 2.5x2.5	10x10 Pad: 5x5	750%	+
2C-1025-01a	4x10 Pad: 4x7.8	10x25 Pad: 5x20	750%	+
3C-1012-01	4x4.5	10x12	800%	-